



CONDUIT CONNECTION PTY LTD

ALL TYPES OF CONDUITS AND ACCESSORIES



Product Catalogue

www.conduitconnection.com.au

DIETZEL
UNIVOLT



info@conduitconnection.com.au
Head Office: (02) 9980 7555

WELCOME



Established in 2006, Conduit Connection Pty Ltd are known for supplying quality Steel Conduits, alongside PVC, Stainless Steel, HFT, Flexible Conduits, Strut and much more.

We pride ourselves on our prompt and professional service. Orders that are placed before 10am, will be delivered on the same day, based on stock availability (same day delivery Sydney Metro only).

We are a member of the Green Building Council Australia.

Contact us today for a free quote, or to be professionally advised on the appropriate products for your project. Please note that some products may vary from images shown.

Regards,

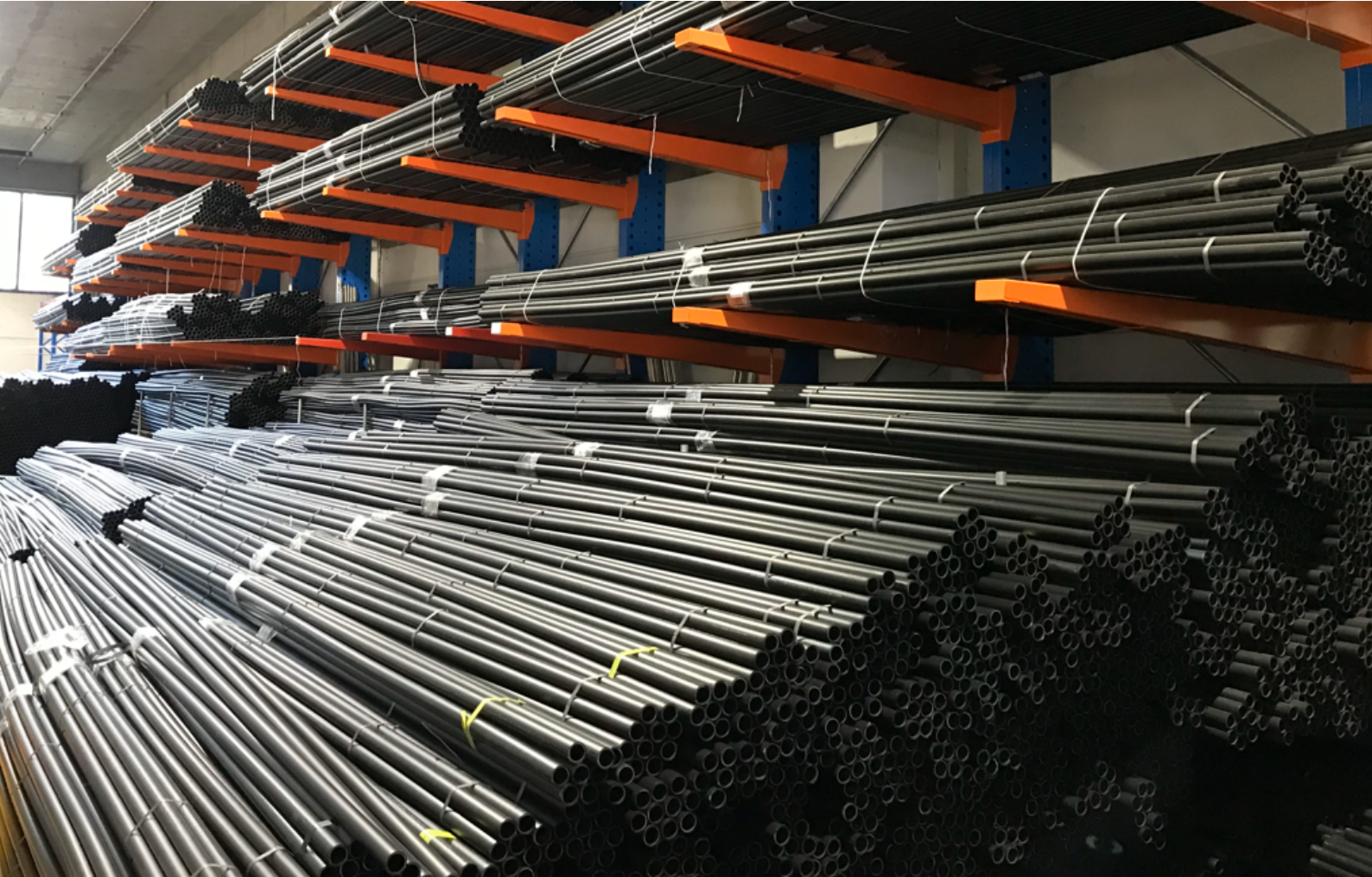
Philip Robb
Managing Director
Conduit Connection Pty Ltd

TABLE OF CONTENTS

4-8	HFT Conduit
9-11	Halogen Free Duct
12-17	HDG Conduit
18-23	PVC Conduit
24-28	Stainless Steel Conduit
29-30	Stainless Trunking
31	Stainless Steel Boxes
32-34	Flexible Conduit
35-37	Pushfit Conduit
38-40	Strut and Accessories
41	Duct
42-48	Sundries and Safety
49-51	Ladder Tray
52-56	Basor Cable Trays



HFT in our Lane Cove, Sydney Warehouse



Heat, Fire, Temperature Resistant (HFT)

HFT (a small sample of our HFT stock is shown above) is manufactured using an innovative base material, which is zero halogen, flame retardant and temperature resistant.

We have genuine certification verified by Lloyd's of London.

- Advanced Fire Behaviour
- Reduced smoke density
- No formation of corrosive gases
- Impact and Compression Resistant
- UV Resistant
- Resistant against many oils, fats, acids and lubricants
- Salt Water Resistant
- White and Grey HFT also available.



HFT available in Black, White and Grey.



TURBO 4M CONDUIT

Part Number	Size
HFBS16	16MM
HFBS20	20MM
HFBS25	25MM
HFBS32	32MM
HFBS40	40MM
HFBS50	50MM
HFBS63	63MM
HFKKR110/3 METRE	110MM
HFKKR160/3 METRE	160MM



HFT COUPLING

Part Number	Size
HFSM16	16MM
HFSM20	20MM
HFSM25	25MM
HFSM32	32MM
HFSM40	40MM
HFSM50	50MM
HFSM63	63MM
HFCKM110	110MM
HFCKM160	160MM



TURBO CORRUGATED

Part Number	Size
HFXP16	16MM
HFXP20	20MM
HFXP25	25MM
HFXP32	32MM
HFXP40	40MM
HFXP50	50MM
HFXP63	63MM



HFT ONE WAY BOX

Part Number	Size
HFCB16/1	16MM
HFCB20/1	20MM
HFCB25/1	25MM
HFCB32/1	32MM



HFT TWO WAY BOX

Part Number	Size
HFCB16/2	16MM
HFCB20/2	20MM
HFCB25/2	25MM
HFCB32/2	32MM



HFT 3 WAY BOX

Part Number	Size
HFCB16/3	16MM
HFCB20/3	20MM
HFCB25/3	25MM
HFCB32/3	32MM



HFT FOUR WAY BOX

Part Number	Size
HFCB16/4	16MM
HFCB20/4	20MM
HFCB25/4	25MM
HFCB32/4	32MM



HFT ANGLE BOX

Part Number	Size
HFCB16/A	16MM
HFCB20/A	20MM
HFCB25/A	25MM
HFCB32/A	32MM



HFT H BOX

Part Number	Size
HFHB16	16MM
HFHB20	20MM
HFHB25	25MM

HFT available in Black, White and Grey.



HFT U BOX

Part Number	Size
HFUB16	16MM
HFUB20	20MM
HFUB25	25MM



HFT Y BOX

Part Number	Size
HFYB16	16MM
HFYB20	20MM
HFYB25	25MM



HFT STRAIGHT GLAND

Part Number	Size
SGL16	16MM
SGL20	20MM
SGL25	25MM
SGL32	32MM
SGL40	40MM
SGL50	50MM
SGL63	63MM



HFT ELBOW GLAND

Part Number	Size
EG20	20MM
EG25	25MM
EG32	32MM



HFT INSPECTION ELBOW

Part Number	Size
HFIE16	16MM
HFIE20	20MM
HFIE25	25MM
HFIE32	32MM



HFT INSPECTION TEE

Part Number	Size
HFIT16	16MM
HFIT20	20MM
HFIT25	25MM
HFIT32	32MM



HFT FEMALE ADAPTOR

Part Number	Size
HFAFT/MBS16	16MM
HFAFT/MBS20	20MM
HFAFT/MBS25	25MM
HFAFT/MBS32	32MM
HFAFT/MBS40	40MM
HFAFT/MBS50	50MM
HFAFT/MBS63	63MM



HFT MALE ADAPTOR W/ LOCKRING

Part Number	Size
HFAMT/LR20	20MM
HFAMT/LR25	25MM
HFAMT/LR32	32MM



HFT STOP PLUG

Part Number	Size
SP-M16B	16MM
SP-M20B	20MM
SP-M25B	25MM
SP-M32B	32MM
SP-M40B	40MM
SP-M50B	50MM
SP-M63B	63MM

HFT available in Black, White and Grey.



HFT SADDLE WITH BASE

Part Number	Size
HFSBS16	16MM
HFSBS20	20MM
HFSBS25	25MM
HFSBS32	32MM
HFSBS40	40MM
HFSBS50	50MM



HFT U CLIP

Part Number	Size
HFCL16	16MM
HFCL20	20MM
HFCL25	25MM
HFCL32	32MM
HFCL40	40MM
HFCL50	50MM
HFCL63	63MM



HFT PIPE END COVER

Part Number	Size
PC20	20MM
PC25	25MM
PC32	32MM



HFT ADAPTABLE BOX

Part Number	Size
PKG100 OP	105x105x64MM
PKG150 OP	200x150x85MM
PKG200 OP	300x200x125MM



HFT BOX LID

Part Number	Size
HFCBL 16-25	16-25MM
HFCBL 32	32MM



HFT CABLE TIE

Part Number	Size
HFCT100MB	100 x 2.5MM 100PKT
HFCT200SB	203 x 4.6MM 100PKT
HFCT203IB	203 x 3.6MM 100PKT
HFCT280	280 x 4.5MM 100PKT
HFCT280SB	280 x 4.8MM 100PKT
HFCT300HDB	300 x 7.6MM 100PKT
HFCT300IB	292 x 3.6MM 100PKT
HFCT320	320 x 7.5MM 100PKT
HFCT368SB	368 x 4.8MM 100PKT
HFCT370HDB	370 x 7.6MM 100PKT

Other sizes available on request



HFT REDUCER

Part Number	Size
HFRD2016	20-16MM
HFRD2520	25-20MM
HFRD3225	32-25MM



EXTENSION RING

Part Number	Size
HFER 16/25-20	16/25-20



ROD HANGER

Part Number	Size
HFRHCLIP25-28	CLIP FOR 10MM ROD HANGER
HFRHCLIP32	CLIP FOR 10MM ROD HANGER

HFT available in Black, White and Grey.



HFT CABLE GLAND

Part Number	Size
NCG16	16MM
NCG20	20MM
NCG25	25MM
NCG32	32MM
NCG40	40MM
NCG50	50MM
NCG63	63MM



HFT CLIP WITH LID

Part Number	Size
CL16B-P	16MM
CL20B-P	20MM
CL25B-P	25MM
CL32B-P	32MM



HFT BEND

Part Number	Size
HFSB16	16MM
HFSB20	20MM
HFSB25	25MM
HFSB32	32MM
HFSB40	40MM
HFSB50	50MM
HFSB63	63MM



HFT ADHESIVE GUN

Part Number
APPGUN



APPLICATOR NOZZLE TO SUIT 45ML CARTRIDGE

Part Number	Size
APPNOZ45	45ml



HFT ADHESIVE 45ML CARTRIDGE

Part Number	Size
HFTAD45	45ml



HFT LOCKNUT

Part Number	Size
HFLN16	16MM
HFLN20	20MM
HFLN25	25MM
HFLN32	32MM
HFLN40	40MM
HFLN50	50MM
HFLN63	63MM



SEGMENTED HFT BEND

Part Number	Size	Colour
KSBF110	110MM	White or Black
KSBF160	160MM	White or Black

Can be bent to any angle from 0° to 90°, or set.



SMOKE DETECTION SYSTEM CONDUIT

Part Number
HFBS25 VESDA



FIRE PROOF COLLAR/ FLANGE

Part Number	Size
110-FPC-BLUE	110mm Fire Proof Collar/ Flange
160-FPC-BLUE	160mm Fire Proof Collar/ Flange

Flange will seal the penetration in the event of fire.



Zero Halogen Duct



Zero Halogen Duct

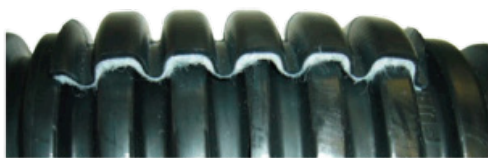
Alongside our range of HFT Conduit comes the heavy duty range of square and round ducting systems, circular conduit comes on large rolls so there is less waste and super quick to install. Size range 30mm up to 200mm and trafficable up to 25 tonnes.

Square ducting can be run on the surface with special fixing brackets or even run flush with the ground. Square ducting comes in 1 metre lengths and simply fix together. Tees, bends, and angles also available ranging from 90mm up to 450mm.

This product has been extensively used on NSW Rail Network.



HFT Round Flexible Duct Features



Before Water Absorption



After Water Absorption

Lightweight

Lined steel pipe	13.1 kg
Hume pipe	26.5 kg
Hard vinyl pipe	3.4 kg

Easy to transport and work

Easy to Bend

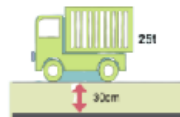
May be bent manually, and the allowable bending radius is 5 times or more of the outer diameter of the pipe conduit.

Long Products

This product has fewer joints, and is available in large rolls.

Robust

The corrugated structure enhances the compression strength. When buried at a depth of 30cm, the pipes are able to stand loads from 25 ton trucks in motion.

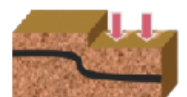


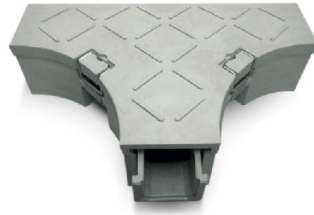
Low Friction

The corrugated structure reduces the surface area that comes into contact with cables, which reduces friction.

Plasticity and Elasticity

The plastic and elastic properties allow the pipe conduits to follow the motions of earthquake and ground subsidence.





HFT STRAIGHT DUCT

Part Number	Size Inner
HFD90	90x100MM 1mtr
HFD135	135x125MM 1mtr
HFD160	160x135MM 1mtr
HFD200	200x185MM 1mtr
HFD300	300x175MM 1mtr
HFD450	450x255MM 0.5mtr

HFT DUCT TEE

Part Number	Size
HFD90T	90x100MM
HFD135T	135x125MM
HFD160T	160x135MM
HFD200T	200x185MM
HFD300T	300x175MM
HFD450T	450x255MM

HFT DUCT 45 DEGREE ANGLE

Part Number	Size
HFD90A	90x100MM
HFD135A	135x125MM
HFD160A	160x135MM
HFD200A	200x185MM
HFD300A	300x175MM
HFD450A	450x255MM



Coupling has a lining that expands when exposed to water, ensuring that it is waterproof.

HFT DUCT BEND

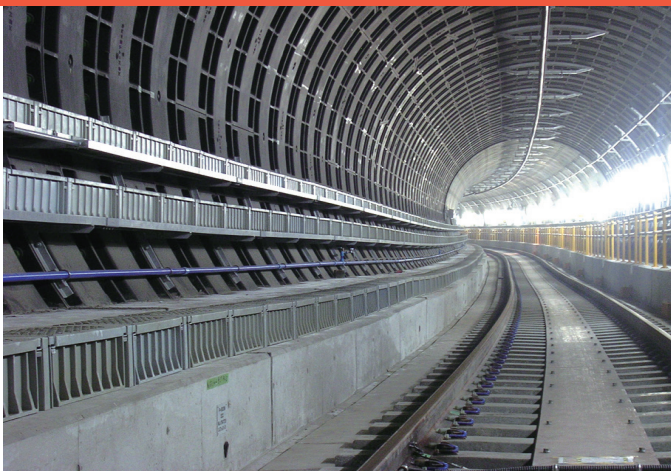
Part Number	Size
HFD90B	90x100MM
HFD135B	135x125MM
HFD160B	160x135MM
HFD200B	200x185MM
HFD300B	300x175MM
HFD450B	450x255MM

HFT ROUND FLEXIBLE DUCT

Part Number	Size- Inner
HFDR30	30MM/300 MTR
HFDR40	42MM/200 MTR
HFDR50	50MM/200 MTR
HFDR65	66MM/100 MTR
HFDR80	80MM/ 100 MTR
HFDR100	100MM/100 MTR
HFDR125	125MM/ 50 MTR
HFDR150	150MM/ 50 MTR
HFDR200	200MM/ 40 MTR

HFT ROUND DUCT COUPLING

Part Number	Size- Inner
HFDR30	30MM
HFDR40	42MM
HFDR50	50MM
HFDR65	66MM
HFDR80	80MM
HFDR100	100MM
HFDR125	125MM
HFDR150	150MM
HFDR200	200MM





Hot Dipped Galvanised (HDG)

A wide range of conduit fittings and accessories are available to suit 20, 25, 32, 40, 50 and 63mm Steel conduit. We have a new range of 100mm Pushfit and Screwed conduit, including 100mm conduit bends and couplings. All fittings conform to BS 4568, BSEN 50086 and BSEN 61386.

Small and large circular conduit boxes are made from malleable iron and hot dipped galvanised after manufacture, and come with a hole in the base for an earthing screw. Boxes are supplied with lids and screws unless specified in the order.

All HDG products can be powder coated to many different colours. Sydney Opera House are just one of many clients that use powder coated orange. This will take approximately 7 days from the date of order to be completed.





HDG CLASS 4 CONDUIT 4M

Part Number	Size
SAL20CON	20MM
SAL25CON	25MM
SAL32CON	32MM
SAL40CON	40MM
SAL50CON	50MM
SAL63CON	63MM



HDG COUPLING

Part Number	Size
R101/20	20MM
R101/25	25MM
R101/32	32MM
R101/40	40MM
R101/50	50MM
R101/63	63MM



HDG BEND

Part Number	Size
R141/20	20MM
R141/25	25MM
R141/32	32MM
R141/40	40MM
R141/50	50MM
R141/63	63MM



HDG FULL SADDLE

Part Number	Size
R451/16	16MM
R451/20	20MM
R451/25	25MM
R451/32	32MM
R451/40	40MM
R451/50	50MM
R451/63	63MM



HDG DISTANCE SADDLE

Part Number	Size
M363/20	20MM
M363/25	25MM
M363/32	32MM
M363/40	40MM
M363/50	50MM
M363/63	63MM



HDG HALF SADDLE

Part Number	Size
HDGHS16	16MM
HDGHS20	20MM
HDGHS25	25MM
HDGHS32	32MM



MALE BRASS BUSH

Part Number	Size
F531/20	20MM
F531/25	25MM
F531/32	32MM
F531/40	40MM
F531/50	50MM



FEMALE BRASS BUSH

Part Number	Size
F534/20	20MM
F534/25	25MM
F534/32	32MM
F534/40	40MM
F534/50	50MM



ZINC PLATED NIPPLE

Part Number	Size
F107/20	20MM
F107/25	25MM
F107/32	32MM
F107/40	40MM
F107/50	50MM



ZINC PLATED LOCKRING

Part Number	Size
F505/20	20MM
F505/25	25MM
F505/32	32MM



INSPECTION ELBOW GASKET

Part Number	Size
F402/20	20MM
F402/25	25MM
F402/32	32MM



INSPECTION TEE GASKET

Part Number	Size
F405/20	20MM
F405/25	25MM
F405/32	32MM



HDG BOX LID GASKET

Part Number	Size
F409/20	SMALL
F410/32	LARGE



HDG INSPECTION ELBOW

Part Number	Size
M123/20	20MM
M123/25	25MM
M123/32	32MM



HDG INSPECTION TEE

Part Number	Size
M133/20	20MM
M133/25	25MM
M133/32	32MM



HDG 1 WAY BOX

Part Number	Size
M181/20	20MM
M181/25	25MM
M211/32	32MM



HDG 2 WAY BOX

Part Number	Size
M182/20	20MM
M182/25	25MM
M212/32	32MM



HDG 3 WAY BOX

Part Number	Size
M184/20	20MM
M184/25	25MM
M214/32	32MM



HDG 4 WAY BOX

Part Number	Size
M185/20	20MM
M185/25	25MM
M215/32	32MM



HDG ANGLE BOX

Part Number	Size
M183/20	20MM
M183/25	25MM
M213/32	32MM



HDG U BOX

Part Number	Size
M195/20	20MM
M195/25	25MM



HDG Y BOX

Part Number	Size
M196/20	20MM
M196/25	25MM



HDG DOME COVER FEMALE

Part Number	Size
M288/20	20MM
M288/25	25MM



HDG REDUCER

Part Number	Size
M471/25-20	25-20MM
M471/32-25	32-25MM
M471/40-32	40-32MM
M471/50-40	50-40MM



HDG HEAVY DUTY LOCKNUT

Part Number	Size
M508/20	20MM
M508/25	25MM
M508/32	32MM
M508/40	40MM
M508/50	50MM
M508/63	63MM



HDG HEX HEAD PLUG

Part Number	Size
M527/20	20MM
M527/25	25MM
M527/32	32MM



HDG 50MM SWEEP BEND + COUPLING

Part Number	Size
R141/50SW90 (90 DEG)	50MM
R141/50SW45 (45 DEG)	50MM
R141/40SW90 (90 DEG)	40MM
R141/40SW45 (45 DEG)	40MM



HDG BOX WITH LID + GASKET

Part Number	Size
R261/75755	75x75x50mm
R261/101075	100x100x75mm
R261/151510	150x150x100mm
R261/303015	300x300x150mm



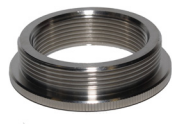
HDG BOX LIDS

Part Number	Size
R281/20 + 3 SCREWS	SMALL
R381/32 + 5 SCREWS	LARGE



HDG TWO PART PIPE CLAMP

Part Number	Size
PC20HDG	20MM
PC25HDG	25MM
PC32HDG	32MM
PC40HDG	40MM
PC50HDG	50MM
PC63HDG	63MM



METAL REDUCER NICKEL PLATED BRASS

Part Number	Size
RD40/32	40-32MM
RD50/40	50-40MM
RD63/50	63-50MM



BENDING MACHINE

Part Number	Size
P/VICEBEM	16, 20, 25, 32MM



THREADING KIT

Part Number	Size
3003904	16,20,25,32MM



MANUAL THREADING KIT

Part Number	Size
SD205	20-25MM
SD32	32MM



CUTTING COMPOUND

Part Number	Size
CL500G	500G



GALVANISED SPRAY

Part Number	Size
GALSPRAY400	400G





**BANG ON MALE THREAD
NICKEL PLATED BRASS**

Part Number	Size
RFX55020	20MM
RFX55025	25MM
RFX55032	32MM
RFX55040	40MM
RFX55050	50MM
RFX55063	63MM

**BANG ON FEMALE THREAD
NICKEL PLATED BRASS**

Part Number	Size
RFX56020	20MM
RFX56025	25MM
RFX56032	32MM
RFX56040	40MM
RFX56050	50MM

**BANG ON COUPLER
NICKEL PLATED BRASS**

Part Number	Size
RFX57020	20MM
RFX57025	25MM
RFX57032	32MM
RFX57040	40MM
RFX57050	50MM
RFX57063	63MM





PVC

All Conduit and Fittings are manufactured and tested in strict accordance with AS/NZS 2053. PVC is a hard and rigid conduit. It is available in white for communications, grey for electrical, orange for heavy duty electrical and also comes in NBN and telco. 22 and 45 degree sweep bends are also available.



PVC MD GREY CONDUIT

Part Number	Size
RC16MD	16MM
RC20MD	20MM
RC25MD	25MM
RC32MD	32MM
RC40MD	40MM
RC50MD	50MM



PVC GREY CORRUGATED CONDUIT

Part Number	Size
CC16	16MM
CC20	20MM
CC25	25MM
CC32	32MM
CC40	40MM
CC50	50MM



PVC ONE WAY SHALLOW

Part Number	Size
JB1-20	20MM
JB1-25	25MM



PVC TWO WAY SHALLOW

Part Number	Size
JB2-20	20MM
JB2-25	25MM



PVC THREE WAY SHALLOW

Part Number	Size
JB3-20	20MM
JB3-25	25MM



PVC FOUR WAY SHALLOW

Part Number	Size
JB4-20	20MM
JB4-25	25MM



PVC RIGHT ANGLE BOX

Part Number	Size
JB5-20	20MM
JB5-25	25MM



PVC ONE WAY DEEP BOX

Part Number	Size
DJB1-20	20MM
DJB1-25	25MM



PVC TWO WAY DEEP

Part Number	Size
DJB2-20	20MM
DJB2-25	25MM





PVC THREE WAY DEEP BOX

Part Number	Size
DJB3-20	20MM
DJB3-25	25MM



PVC FOUR WAY DEEP BOX

Part Number	Size
DJB4-20	20MM
DJB4-25	25MM



PVC DEEP ANGLE BOX

Part Number	Size
DJB5-20	20MM
DJB5-25	25MM



PVC GREY COUPLING

Part Number	Size
TC20	20MM
TC25	25MM
TC32	32MM
TC40	40MM
TC50	50MM



**PVC STRAIGHT GLAND/
LOCKRING**

Part Number	Size
SG20	20MM
SG25	25MM
SG32	32MM
SG40	40MM
SG50	50MM



PVC GREY ELBOW

Part Number	Size
SE20	20MM
SE25	25MM



PVC GREY BEND

Part Number	Size
SB20	20MM
SB25	25MM
SB32	32MM
SB40	40MM
SB50	50MM



PVC INSPECTION ELBOW

Part Number	Size
IE20	20MM
IE25	25MM
IE32	32MM



PVC INSPECTION TEE

Part Number	Size
IT20	20MM
IT25	25MM
IT32	32MM





ROUND J BOX BONDECK CLIP ADAPTOR

Part Number	Size
240CA	ONE SIZE



PVC GREY U CLIP

Part Number	Size
CLIP16	16MM
CLIP20	20MM
CLIP25	25MM



PVC GREY LOCKRING

Part Number	Size
LR16	16MM
LR20	20MM
LR25	25MM
LR32	32MM
LR40	40MM
LR50	50MM



PVC PLAIN TO SCREW ADAPTOR

Part Number	Size
PS20	20MM
PS25	25MM
PS32	32MM
PS40	40MM
PS50	50MM



PVC PLUG

Part Number	Size
CP20	20MM
CP25	25MM



PVC ADAPTABLE BOX

Part Number	Size
AB332	75x75x50MM W/GASKET
AB333	75x75x75MM W/GASKET
AB442	100x100x50MM W/GASKET
AB443	100x100x75MM W/GASKET
AB662	150x100x50MM W/GASKET
AB663	150x150x75MM W/GASKET
AB664	150x150x100MM W/GASKET
AB963	225x150x75MM W/GASKET
AB993	225x225x75MM W/GASKET
AB994	225x225x100MM W/GASKET
AB12123	300x300x75MM W/GASKET
AB12126	300x300x150MM W/GASKET



PVC HD ORANGE CONDUIT

Part Number	Size
RC20HD	20MM
RC25HD	25MM
RC32HD	32MM
RC40HD	40MM
RC50HD	50MM
RC63HD	63MM
RC80HD	80MM
RC100HD	100MM
RC125HD	125MM
RC150HD	150MM



PVC EXTENSION RING

Part Number	Size
EXTN	16-25MM



PVC ORANGE BEND

Part Number	Size
SBO20	20MM
SBO25	25MM
SBO32	32MM



PVC ORANGE COUPLING

Part Number	Size
TCO20	20MM
TCO25	25MM
TCO32	32MM
TCO40	40MM
TCO50	50MM
TCO63	63MM
TCO80	80MM
TC100	100MM
TC125	125MM
TC150	150MM



PVC HD 90 DEG SWEEP BEND

Part Number	Size
SWB20-90	20MM
SWB25-90	25MM
SWB32-90	32MM
SWB40-90	40MM
SWB50-90	50MM
SWB63-90	63MM
SWB80-90	80MM
SWB100-90	100MM
SWB125-90	125MM
SWB150-90	150MM



PVC ORANGE ELBOW

Part Number	Size
SEO20	20MM
SEO25	25MM



PVC ORANGE CORRUGATED CONDUIT

Part Number	Size
CCO20	20MM
CCO25	25MM
CCO32	32MM
CCO40	40MM
CCO50	50MM



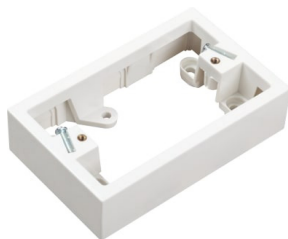
PVC ORANGE LOCATING FLANGE

Part Number	Size
LC20	20MM
LC25	25MM
LC32	32MM



PVC WHITE DUCTING

Part Number	Size
CD1610	16x10MM
CD1616	16x16MM
CD2516	25x16MM
CD2525	25x25MM
CD4025	40x25MM
CD5025	50x25MM
CD5050	50x50MM
CD7550	75x50MM
CD7575	75x75MM
CD10050	100x50MM
CD10075	100x75MM
CD100100	100x100MM
CD15075	150x75MM
CD150100	150x100MM
CD20050	200x50MM
CD200100	200x100MM



MOUNTING BLOCK

Part Number	Size
MB34W	34MM WHITE
MB34B	34MM BLACK



PVC COMMS COUPLING

Part Number	Size
COMMTC20	20MM
COMMTC25	25MM
COMMTC32	32MM
COMMCT50	50MM



PVC WHITE COUPLING

Part Number	Size
TCW20	20MM
TCW25	25MM
TCW32	32MM
TCW50	50MM



PVC WHITE STANDARD BEND

Part Number	Size
SBW20	20MM
SBW25	25MM
SBW32	32MM



PVC WHITE CONDUIT

Part Number	Size
RCW20	20MM
RCW25	25MM
RCW32	32MM
RCW50	50MM



PVC WHITE COMMS BEND 90 DEGREE

Part Number	Size
COMB20-90	20MM
COMB25-90	25MM
COMB32-90	32MM
COMB50-90	50MM



**ZINC HALF SADDLE
6.5MM/5MM HOLE**

Part Number	Size
HS16-6.5	16MM 6.5MM HOLE
HS20-5	20MM 5MM HOLE
HS20-6.5	20MM 6.5MM HOLE
HS25-5	25MM 5MM HOLE
HS25-6.5	25MM 6.5MM HOLE
HS32-5	32MM 5MM HOLE
HS32-6.5	32MM 6.5MM HOLE



GLUE

Part Number	Size
BG250	250ML POT BLUE GLUE
BG500	500ML POT BLUE GLUE
BG1L	1L POT BLUE GLUE
BG4L	4L POT BLUE GLUE
250MLC	250ML POT CLEAR GLUE



DISPOSABLE ORANGE LID W/LUGS

Part Number	Size
DLO	-



Stainless Steel

Our 316 grade Stainless Steel Conduit is best used for protecting wires and cables. It is heavy duty, so ideal for outdoor or underground use, tough environments, salt water areas and food processing areas where constant wipedown and cleaning is required.





**STAINLESS STEEL CONDUIT
316 GRADE**

Part Number	Size
C20CL	20MM
C25CL	25MM
C32CL	32MM
C40CL	40MM
C50CL	50MM



**STAINLESS STEEL COUPLING
316 GRADE**

Part Number	Size
C20SC	20MM
C25SC	25MM
C32SC	32MM
C40SC	40MM
C50SC	50MM



**STAINLESS STEEL ONE WAY
BOX 316 GRADE**

Part Number	Size
C20EB	20MM
C25EB	25MM
C32EB	32MM



**STAINLESS STEEL TWO WAY
BOX 316 GRADE**

Part Number	Size
C20SB	20MM
C25SB	25MM
C32SB	32MM



**STAINLESS STEEL THREE WAY
BOX 316 GRADE**

Part Number	Size
C20TB	20MM
C25TB	25MM
C32TB	32MM



**STAINLESS STEEL FOUR WAY
BOX 316 GRADE**

Part Number	Size
C20FW	20MM
C25FW	25MM
C32FW	32MM



**STAINLESS STEEL ANGLE BOX
316 GRADE**

Part Number	Size
C20AB	20MM
C25AB	25MM
C32AB	32MM



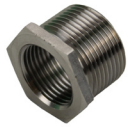
**STAINLESS STEEL U BOX
316 GRADE**

Part Number	Size
C20UB	20MM
C25UB	25MM



**STAINLESS STEEL Y BOX
316 GRADE**

Part Number	Size
C20YB	20MM
C25YB	25MM



**STAINLESS STEEL REDUCER
316 GRADE**

Part Number	Size
C2016	20-16MM
C2520	25-20MM
C3220	32-20MM
C3225	32-25MM



**STAINLESS STEEL DOMELID
316 GRADE**

Part Number	Size
C20DL	20MM
C25DL	25MM



**STAINLESS STEEL
INSPECTION ELBOW 316 GRADE**

Part Number	Size
C20IE	20MM
C25IE	25MM
C32IE	32MM



**STAINLESS STEEL
INSPECTION TEE 316 GRADE**

Part Number	Size
C20IT	20MM
C25IT	25MM
C32IT	32MM



**STAINLESS STEEL FLANGED
COUPLING 316 GRADE**

Part Number	Size
C20FC	20MM
C25FC	25MM
C32FC	32MM



**STAINLESS STEEL LOCKNUT
316 GRADE**

Part Number	Size
C20LN	20MM
C25LN	25MM
C32LN	32MM
C40LN	40MM
C50LN	50MM
C63LN	63MM



**STAINLESS STEEL 100MM LONG
NIPPLE 316 GRADE**

Part Number	Size
C20NL	20MM
C25NL	25MM
C32NL	32MM



**STAINLESS STEEL SHORT NIPPLE
316 GRADE**

Part Number	Size
C20NS	20MM
C25NS	25MM
C32NS	32MM



**STAINLESS STEEL STOP
PLUG 316 GRADE**

Part Number	Size
C20SP	20MM
C25SP	25MM
C32SP	32MM



**STAINLESS STEEL DISTANCE
SADDLE 316 GRADE**

Part Number	Size
C20DS	20MM
C25DS	25MM
C32DS	32MM



**STAINLESS STEEL
HALF SADDLE 316 GRADE**

Part Number	Size
20SSHS	20MM
25SSHS	25MM
32SSHS	32MM



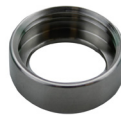
**STAINLESS STEEL
DOUBLE SIDED SADDLE 316 GRADE**

Part Number	Size
C20DSS	20MM
C25DSS	25MM
C32DSS	32MM
C40DSS	40MM
C50DSS	50MM



NEOPRENE WASHER

Part Number	Size
C20NW	20MM
C25NW	25MM
C32NW	32MM



**STAINLESS STEEL FEMALE
BUSH 316 GRADE**

Part Number	Size
C20FB	20MM
C25FB	25MM
C32FB	32MM



**STAINLESS STEEL MALE BUSH
316 GRADE**

Part Number	Size
C20MB	20MM
C25MB	25MM
C32MB	32MM



**STAINLESS STEEL BEND
316 GRADE**

Part Number	Size
C20MN	20MM
C25MN	25MM
C32MN	32MM



**STAINLESS STEEL
THREADED ROD 316 GRADE**

Part Number	Size
M10TRSS1	10MM/1M LENGTH
M10TRSS3	10MM/3M LENGTH





**STAINLESS STEEL
MUNSON BASE**

Part Number	Size
CXXMRB	10MM



**STAINLESS STEEL MUNSON
RING 316 GRADE**

Part Number	Size
C20MR	20MM
C25MR	25MM
C32MR	32MM



**STAINLESS STEEL MUNSON
RING STUD 316 GRADE**

Part Number	Size
CXXMRS050	50MM
CXXMRS075	75MM
CXXMRS100	100MM



**STAINLESS STEEL
PUSHFIT BEND 316**

Part Number	Size
ESB20	20MM
ESB25	25MM
ESB32	32MM



**STAINLESS STEEL PUSHFIT
CONDUIT 316 GRADE**

Part Number	Size
ESR20	20MM
ESR25	25MM
ESR32	32MM



**STAINLESS STEEL
PUSHFIT COUPLING 316**

Part Number	Size
ESM20	20MM
ESM25	25MM
ESM32	32MM



**STAINLESS STEEL BANG
ON FEMALE 316 GRADE**

Part Number	Size
SSRFX56020	20MM
SSRFX56025	25MM
SSRFX56032	32MM



**STAINLESS STEEL BANG
ON MALE 316 GRADE**

Part Number	Size
SSRFX55020	20MM
SSRFX55025	25MM
SSRFX55032	32MM



Stainless Steel Trunking

- Stainless steel 3 metre trunking available in 304 or 316 grade, lead times may apply.
- Corrosion resistant, long lasting
- 45 and 90 degree bends, tees, intersections and other accessories available
- Fewer coupling screws per installation make the trunking easy to install
- Patented cover plate over each lid joint reduces the ingress of foreign matter

APEX LID TRUNKING



15 Degree Apex lid minimises the risk of undesirable substances/objects resting on the lid of the trunking.

Part Number	Size
C7575ALT	75x75MM
C100100ALT	100x100MM
C150100ALT	150x100MM
C150150ALT	150x150MM

FLAT LID TRUNKING



Fully welded bends make the installation easier to clean than other brands. UL listed lengths and accessories.

Part Number	Size
C5050FLT	50x50MM
C7575FLT	75x75MM
C10050FLT	100x50MM
C100100FLT	100x100MM
C150100FLT	150x100MM
C150150FLT	150x150MM



ADAPTABLE BOX 316 GRADE

Part Number	Size
C15158AB	150x150x80MM
C151512AB	150x150x120MM
C20208AB	200x200x80MM
C202012AB	200x200x120MM
C30158AB	300x150x80MM
C301512AB	300x150x120MM
C30208AB	300x200x80MM
C302012AB	300x200x120MM
C303015AB	300x300x150MM
C40208AB	400x200x80MM
C402012AB	400x200x120MM
C40308AB	400x300x80MM
C403012AB	400x300x120MM

Stainless Steel Adaptable Boxes

- Other sizes and designs available, for example hinged lids.
- Suitable for wet and corrosive environments
- Made from 1.2mm 316 Stainless Steel
- Fully welded construction IP66 rating
- Lid earthed to box via earth studs
- Polyurethane door seal
- Door fitted with 4 stainless steel sealing fastening screws
- 2mm Stainless Steel gear tray included





Flexible

Flexible conduit is a cost-effective solution for cable protection. It is designed to protect electrical wiring and it is an excellent choice for more complex installations where flexibility is a necessity. We also supply all of the accessories required to make the installation easy.

We offer a range of different brands, colours and sizes to suit all projects. With over 80 types available, please request the type of conduit you are looking for, and we will help source it for you.

PVC and corrugated conduit can be sourced in many sizes and colours required for a range of trade applications.





BLACK PVC SMOOTH-SHEATHED STEEL FLEX

Part Number	Size
LTP16B	16MM
LTP20B	20MM
LTP25B	25MM
LTP32B	32MM
LTP40B	40MM
LTP50B	50MM
LTP63B	63MM



ORANGE PVC SMOOTH-SHEATHED STEEL FLEX

Part Number	Size
LTP16O	16MM
LTP20O	20MM
LTP25O	25MM
LTP32O	32MM



LIQUID TIGHT GLAND

Part Number	Size
LTP16-M16-C	16MM
LTP20-M20-C	20MM
LTP25-M25-C	25MM
LTP32-M32-C	32MM
LTP40-M40-C	40MM
LTP50-M50-C	50MM
LTP63-M63-C	63MM



90 DEGREE LIQUID TIGHT GLAND

Part Number	Size
LTP16-M16-C90	16MM
LTP20-M20-C90	20MM
LTP25-M25-C90	25MM
LTP32-M32-C90	32MM
LTP40-M40-C90	40MM
LTP50-M50-C90	50MM
LTP63-M63-C90	63MM



STAINLESS STEEL FLEXIBLE WITH BLACK SHEATH

Part Number	Size
LTPSS16B	16MM
LTPSS20B	20MM
LTPSS25B	25MM
LTPSS32B	32MM
LTPSS40B	40MM
LTPSS50B	50MM
LTPSS63B	63MM



LIQUID TIGHT GLAND 316 GRADE

Part Number	Size
LTP16-M16-CSS	16MM
LTP20-M20-CSS	20MM
LTP25-M25-CSS	25MM
LTP32-M32-CSS	32MM
LTP40-M40-CSS	40MM
LTP50-M50-CSS	50MM
LTP63-M63-CSS	63MM



PLAIN STEEL FLEX

Part Number	Size
FU16	16MM
FU20	20MM
FU25	25MM
FU32	32MM
FU40	40MM
FU50	50MM
FU63	63MM



GLAND TO SUIT FU

Part Number	Size
FU16-M16-M	16MM
FU20-M20-M	20MM
FU25-M25-M	25MM
FU32-M32-M	32MM
FU40-M40-M	40MM
FU50-M50-M	50MM
FU63-M63-M	63MM



SWIVEL GLAND TO SUIT FU

Part Number	Size
FU16-M20-S	16MM
FU20-M20-S	20MM
FU25-M25-S	25MM
FU32-M32-S	32MM
FU40-M40-S	40MM
FU50-M50-S	50MM
FU63-M63-S	63MM



**BLACK SHEATHED STEEL FLEX
CORRUGATED**

Part Number	Size
FSU20B	20MM
FSU25B	25MM
FSU32B	32MM
FSU40B	40MM
FSU50B	50MM
FSU63B	63MM



**STRAIGHT GLAND TO
SUIT FSU**

Part Number	Size
FSU20-M20-M	20MM
FSU25-M25-M	25MM
FSU32-M32-M	32MM
FSU40-M40-M	40MM
FSU50-M50-M	50MM
FSU63-M63-M	63MM



**SWIVEL GLAND TO
SUIT FSU**

Part Number	Size
FSU20-M20-S	20MM
FSU25-M25-S	25MM
FSU32-M32-S	32MM
FSU40-M40-S	40MM
FSU50-M50-S	50MM
FSU63-M63-S	63MM



**STAINLESS STEEL FLEXIBLE
CONDUIT 316 GRADE**

Part Number	Size
SSU16	16MM
SSU20	20MM
SSU25	25MM
SSU32	32MM
SSU40	40MM
SSU50	50MM
SSU63	63MM



**GLAND TO SUIT SSU
316 GRADE**

Part Number	Size
SSU16-M16-M	16MM
SSU20-M20-M	20MM
SSU25-M25-M	25MM
SSU32-M32-M	32MM
SSU40-M40-M	40MM
SSU50-M50-M	50MM
SSU63-M63-M	63MM



**SMOOTH FINISH BLACK FLEXIBLE
(OTHER COLOURS AVAILABLE)**

Part Number	Size
LPC16B	16MM
LPC20B	20MM
LPC25B	25MM
LPC32B	32MM
LPC40B	40MM
LPC50B	50MM
LPC63B	63MM



**STRAIGHT NYLON
COMPRESSION FITTING**

Part Number	Size
MPC-16-M16B	16MM
MPC-20-M20B	20MM
MPC-25-M25B	25MM
MPC-32-M32B	32MM
MPC-40-M40B	40MM
MPC-50-M50B	50MM
MPC-63-M63B	63MM



STEEL FERRULE

Part Number	Size
16FER	16MM
20FER	20MM
25FER	25MM
32FER	32MM
40FER	40MM
50FER	50MM
63FER	63MM



SEALING WASHER

Part Number	Size
SW16	16MM
SW20	20MM
SW25	25MM
SW32	32MM
SW40	40MM
SW50	50MM
SW63	63MM





Pushfit

Pushfit conduits are simple to use, suitable for data protection as well as general electrical work.

All accessories are available including 1,2,3 and 4 way boxes, and bends. Conduits can be powder coated to many different colours. This can be completed in approximately 7 days from the date of order.





**PUSHFIT CONDUIT
4M**

Part Number	Size
NTCON20	20MM
NTCON25	25MM
NTCON32	32MM
NTCON40	40MM
NTCON50	50MM



**HOT DIPPED GALVANISED
PUSHFIT CONDUIT 3M**

Part Number	Size
SSR20	20MM
SSR25	25MM
SSR32	32MM
SSR40	40MM
SSR50	50MM



PUSHFIT ONE WAY SHALLOW BOX

Part Number	Size
P20-M1WB	20MM
P25-M1WB	25MM



**PUSHFIT TWO WAY
SHALLOW BOX**

Part Number	Size
P20-M2WB	20MM
P25-M2WB	25MM



**PUSHFIT THREE WAY
SHALLOW BOX**

Part Number	Size
P20-M3WB	20MM
P25-M3WB	25MM



**PUSHFIT FOUR WAY
SHALLOW BOX**

Part Number	Size
P20-M4WB	20MM
P25-M4WB	25MM



**PUSHFIT PLAIN
METAL BEND**

Part Number	Size
P20-MBEND	20MM
P25-MBEND	25MM



**PUSHFIT PLAIN
METAL COUPLING**

Part Number	Size
P20-MCOUP	20MM
P25-MCOUP	25MM



PUSHFIT PLAIN CONDUIT FLANGE

Part Number	Size
P20-MCF	20MM
P25-MCF	25MM



PUSHFIT METAL ELBOW

Part Number	Size
P20-MELB	20MM
P25-MELB	25MM



PUSHFIT PLAIN TO SCREWED FEMALE ADAPTOR

Part Number	Size
P20-MFSCOU	20MM
P25-MFSCOU	25MM



PUSHFIT METAL INSPECTION ELBOW

Part Number	Size
P20-MINELB	20MM
P25-MINELB	25MM



PUSHFIT PLAIN METAL INSPECTION TEE

Part Number	Size
P20-MINTEE	20MM
P25-MINTEE	25MM



PUSHFIT PLAIN TO SCREWED MALE ADAPTOR

Part Number	Size
P20-MSAD	20MM
P25-MSAD	25MM



PUSHFIT REDUCER

Part Number	Size
P25-20MCR	25-20MM



HDG PUSHFIT SWEEP BEND

Part Number	Size
SSB20	20MM
SSB25	25MM
SSB32	32MM
SSB40	40MM
SSB50	50MM



HDG PUSHFIT COUPLING

Part Number	Size
SSM20	20MM
SSM25	25MM
SSM32	32MM
SSM40	40MM
SSM50	50MM



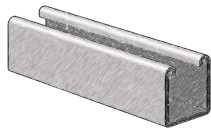
Strut and Accessories

We have a full range of strut and accessories available. Products are also available in zinc.

A full range of clamps are also available.

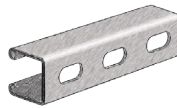
Contact us today to find out about products we can source for you that may not be displayed in this catalogue.





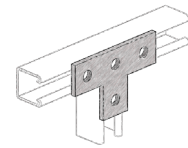
**PLAIN CHANNEL STRUT
6M LENGTH HDG**

Part Number	Size
CASTRUTP41x41	41x41mm
CASTRUTP41x21	41x21mm



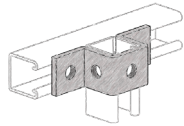
**SLOTTED CHANNEL STRUT
6M LENGTH HDG**

Part Number	Size
CASTRUTSL41x21	41x21mm
CASTRUTSL41x41	41x41mm



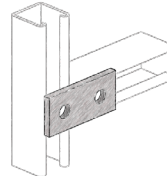
1031 TEE PLATE FITTING HDG

Part Number	Size
CASTPF	



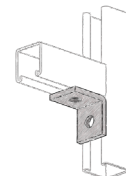
**U SHAPE FITTING
(TOP HAT) HDG**

Part Number	Size
CASTH21	21mm
CASTH41	41mm



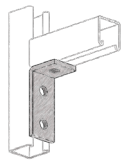
**1065 TWO HOLE PLATE
FITTING HDG**

Part Number	Size
CASFP2	



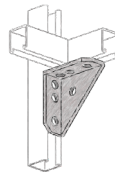
**1026 TWO HOLE RIGHT
ANGLE BRACKET HDG**

Part Number	Size
CASAB2	



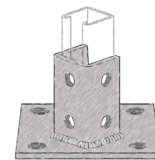
**1458 THREE HOLE
ANGLE BRACKET HDG**

Part Number	Size
CASAB3	



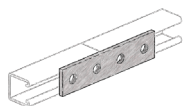
**2484 BRACED
ANGLE BRACKET HDG**

Part Number	Size
CASBAB	



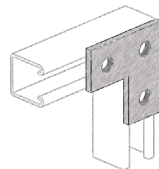
2072A STRUT BASE PLATE

Part Number	Size
CASBP	



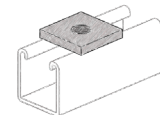
**1067 FOUR HOLE PLATE
FITTING HDG**

Part Number	Size
CASFP4	



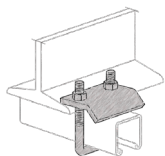
**1036 RIGHT ANGLE PLATE
FITTING HDG**

Part Number	Size
CASRAPF	



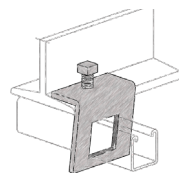
**1062 M12 ONE HOLE SQUARE
FLAT PLATE HDG**

Part Number	Size
CASSFP	



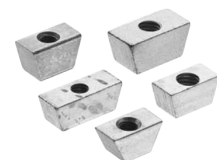
**U BOLT GIRDER
CLAMP HDG**

Part Number	Size
CASUGC	



**WINDOW GIRDER CLAMP
HDG**

Part Number	Size
CASWGC	41x41MM



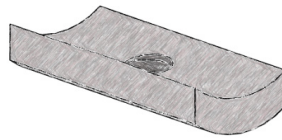
WEDGE NUT HDG

Part Number	Size
CAM10WN	10MM
CAM12WN	12MM



HEX EXTENSION COUPLING HDG

Part Number	Size
CAM8HEC	8MM
CAM10HEC	10MM
CAM12HEC	12MM



M6 BUTTERFLY NUT HDG

Part Number	Size
CAM6BN	6MM



THREADED ROD HDG

Part Number	Thread Size
CAM8TR	8MM
CAM10TR	10MM
CAM12TR	12MM



HEX NUT HDG

Part Number	Thread Size
CAM6HN	6MM
CAM8HN	8MM
CAM10HN	10MM
CAM12HN	12MM



FLAT WASHER HDG

Part Number	Size
CAM6FW	6MM
CAM8FW	8MM
CAM10FW	10MM
CAM12FW	12MM



LONG SPRING CHANNEL NUT HDG

Part Number	Thread Size
CAM6CNLS	6MM
CAM8CNLS	8MM
CAM10CNLS	10MM
CAM12CLNS	12MM



CHANNEL NUT HDG

Part Number	Thread Size
CAM6CN	6MM
CAM8CN	8MM
CAM10CN	10MM
CAM12CN	12MM



HEX BOLT HDG

Part Number	Size
CAM620HB	6x20MM
CAM820HB	8x20MM
CAM825HB	8x25MM
CAM1020HB	10x20MM
CAM1025HB	10x25MM
CAM1030HB	10x30MM
CAM1035HB	10x35MM
CAM1050HB	10x50MM
CAM1230HB	12x30MM
CAM1240HB	12x40MM



HDG BEAM CLAMP

Part Number	Size
333CIS203	5MM-20MM FLANGE
333CIS303	20MM-30MM FLANGE
333CIS453	30MM-45MM FLANGE



METAL CUTTING DISCS

Part Number	Size
COO41	115x1x22MM
COO65	125x1x22MM



CHANNEL END CAP

Part Number	Size
CAGCE21	21x41MM
CAGCE41	41x41MM



CLOSURE STRIP GREY

Part Number	Size
CAGCS	41MMx 3MTR
GCE41	41MM



CONDUIT CLIP TO FIT BEAM CLAMP

Part Number	Size
333CISR173	TO SUIT 20MM CONDUIT
333CISR213	TO SUIT 25MM CONDUIT
333CISR283	TO SUIT 32MM CONDUIT
333CISR423	TO SUIT 40MM CONDUIT
333CISR483	TO SUIT 50MM CONDUIT
333CISR603	TO SUIT 63MM CONDUIT

METAL SCREW LID DUCT KIT 2.4M

Part Number	Size
MCD5050	50x50MM
MCD7550	75x50MM
MCD7575	75x75MM
MCD10075	100x75MM
MCD100100	100x100MM
MCD15075	150x75MM
MCD150100	150x100MM
MCD22575	225x75MM
MCD30075	300x75MM



METAL DUCT BLANK END

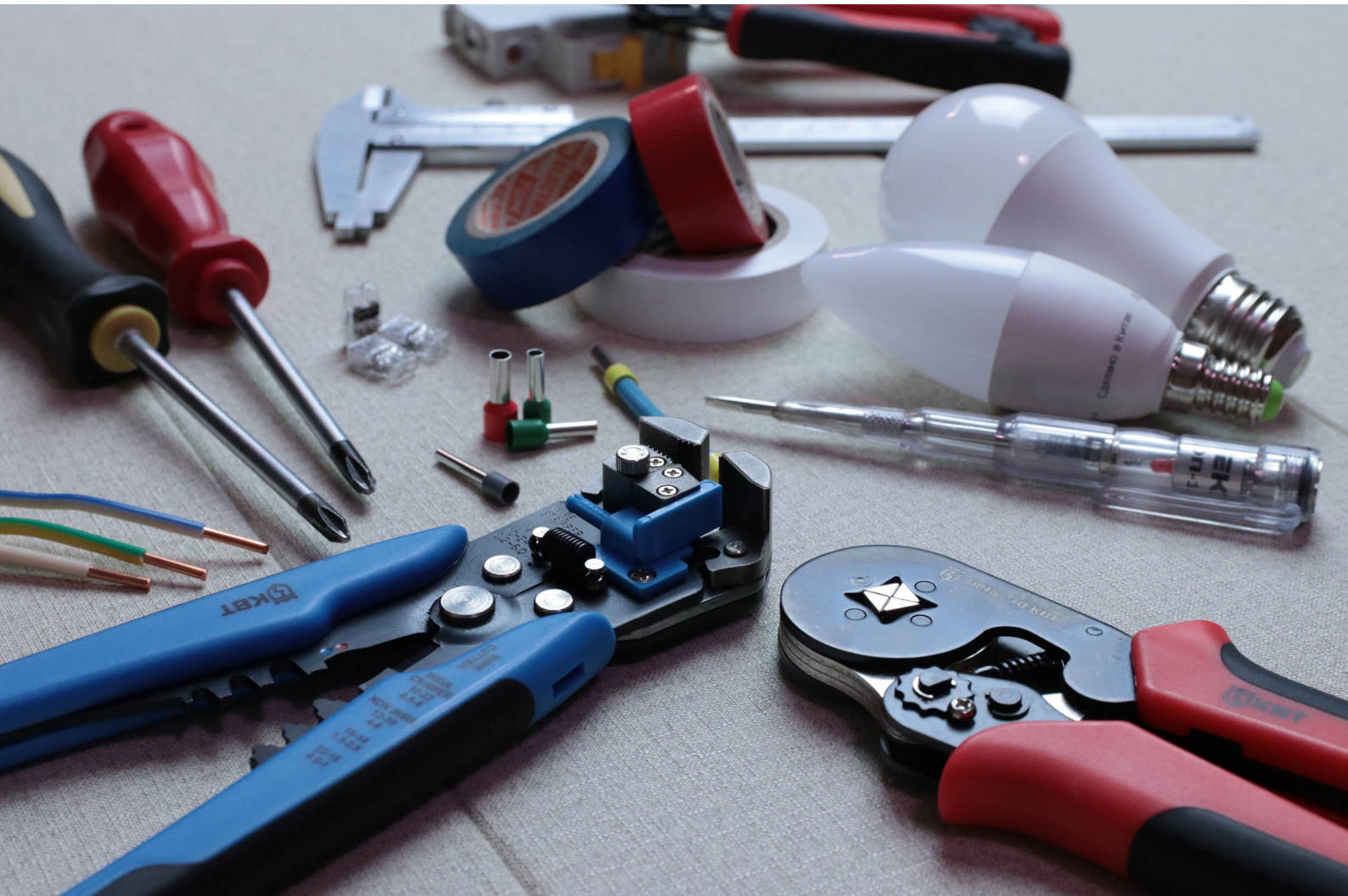
Part Number	Size
MCDBE5050	50x50MM
MCDBE7550	75x50MM
MCDBE7575	75x75MM
MCDBE10075	100x75MM
MCDBE100100	100x100MM
MCDBE15075	150x75MM
MCDBE150100	150x100MM
MCDBE22575	225x75MM
MCDBE30075	300x75MM



Duct

The duct kit is complete with lid and joiner. Bends, tees and other accessories to suit are available. Our duct has a galvabond finish, and is also available in a clip lid option.

Nuts and bolts are included with the lid and joiners.



Sundries

View our wide range of fasteners, connectors, crimps, drill bits, safety wear and cable ties. We are also able to supply products not shown in this catalogue.

We are also able to supply ring terminals, spade terminals, pin lugs, long palm lugs, dual hole lugs, copper stalk lugs, links, line taps and tools.

Contact us for assistance with finding the right product for your project.



**GALV BUTTON HEAD SCREW
8G X 32MM 100PK**

Part Number	Size
21BBG32	32MM



DROP IN ANCHOR

Part Number	Size
M10HKD	10MM
M12HKD	12MM



**BUGLE HEAD NEEDLE POINT
SCREW 100PK**

Part Number	Size
BHP720	7g x 20MM 100PK
BHP745	7g x 45MM 100PK
BHP750	7g x 50MM 100PK
BHP850	8g x 50MM 100PK
BHP863	8g x 63MM 100PK
BHP875	8g x 75MM 100PK
BTN812	8g x 15MM 100PK
BTN825	8g x 25MM 100PK
BTN832	8g x 32MM 100PK



**DYNA BOLT SLEEVE ANCHOR
HDG**

Part Number	Size
M10DB	10MM
M12DB	12MM



ROOFING BOLTS & NUTS 50PK

Part Number	Size
TNB142RB	



**SELF DRILL BUTTON HEAD
100PK**

Part Number	Size
FRBHS825	8G 25MM



**HOLLOW WALL ANCHOR
M-TYPE BOX 100**

Part Number	Size
HWA12	12MM



**HOLLOW WALL
ANCHORS 50PK**

Part Number	Size
TNBAMB4	6x10mm
TNBA09416	10x16mm



**PLASTER BRACKET CLIP
HORIZONTAL**

Part Number	Size
HPB	



**NYLON ANCHOR ROUND
HEAD 80PK**

Part Number	Size
TNB525R (100 PK)	5 x25MM
TNB6550R (80 PK)	6.5x25MM



**SELF DRILLING ZIP-ITS
NYLON 25 PK**

Part Number	Size
TNBWM08NY	6-7G



**SELF DRILLING ZIP-ITS METAL
25 PK**

Part Number	Size
TNBWM08	8G

FASTENERS



**DOG LEG ANCHOR
MUSHROOM HD SPIKE PK 100**

Part Number	Size
DLA525	M5x25mm



**HEX HEAD SELF DRILLING
SCREW 50PK**

Part Number	Size
HHSDS20	20MM
HHSDS30	30MM



**CHRISTMAS TREE PLUG
100PK**

Part Number	Size
CTP	6.5MM



**GREEN STAR PLUG
25 PK**

Part Number	Size
WPG25	6.5MM hole



**PIN CRIMP INSULATED BLACK
500PK**

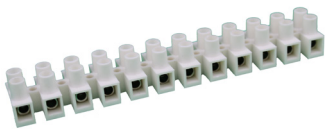
Part Number	Size
BL015	1.5MM



**PIN CRIMP TWIN INSULATED
BLACK 100PK**

Part Number	Size
BLT015	2 X 1.5MM

CRIMPS



**STRIP CONNECTOR
10 AMP**

Part Number	Size
STRIPCON10A	10AMP



**1 SCREW CONNECTOR 100
PIECE JAR**

Part Number
CN1

CONNECTORS



CABLE TIE WHITE 100PK

Part Number	Type	Size
CT100	WHITE	100MM
CT200	WHITE	200MM
CT300	WHITE	300MM
CT500	WHITE	500MM



CABLE TIE BLACK 100PK

Part Number	Type	Size
CT100B	BLACK	100MM
CT200B	BLACK	200MM
CT300B	BLACK	300MM
CT500B	BLACK	500MM



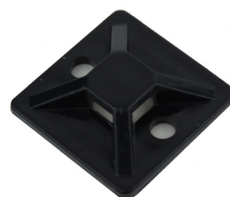
CABLE TIE STAINLESS STEEL 316 GRADE

Part Number	Type	Size
SST200	STAINLESS	200MM
SST360	STAINLESS	360MM



CABLE TIE MOUNT BLACK

Part Number	Type	Size
SPB19	Black	19x19MM
SPB28	Black	28x28MM



DRILL BITS



SDS PLUS DRILL BIT

Part Number	Size
SDS6	6x110MM
SDS6.5	6.5x110MM
SDS8	8x110MM
SDS10	10x160MM
SDS12	12x160MM



JOBBER-VIPER DRILL BIT

Part Number	Size
D1050200	2MM
D1050600	6MM
D1050650	6.5MM
D1050800	8MM
D1051000	10MM
D1051200	12MM



LUG CRIMPER HEX 6-50MM

Part Number	Size
HX50N	



LUG CRIMPER INDENT
1.5-10MM

Part Number	Size
KH8	



LUG CRIMPER HEX 10-120MM

Part Number	Size
HX120N	



PREMIUM LEATHER GLOVES

Part Number	Size
GLOVEM	MEDIUM



SAFETY GLASSES CLEAR

Part Number	Size
SGC	ONE SIZE



EAR PLUGS

Part Number	Size
EP	ONE SIZE



HARD HAT WHITE

Part Number	Size
HHW	ONE SIZE



SAFETY VEST

Part Number	Size
SV	ONE SIZE



HAND SANITISER

Part Number	Size
HSG500	500ML

TOOLS

SAFETY



HOLESAW H105

Part Number	Size
H1050200	20MM
H1050250	25MM
H1050320	32MM
H1050400	40MM
H1050510	50MM
H1050630	63MM



QUICK RELEASE ARBOR

Part Number	Size
H1224311	11MM



QUICK RELEASE ADAPTOR

Part Number	Size
H1228013	1/2" (14-30MM)



QUICK RELEASE ADAPTOR

Part Number	Size
H1228016	5/8"18 (32-150MM)



QUICK RELEASE ADAPTOR

Part Number	Size
H1228116	5/8" (40-210MM)



HEATSHRINK

Part Number	Size
HTW10BK/4FT	10MM BLACK
HTW10RD/4FT	10MM RED
HTW20BK/4FT	20MM BLACK
HTW20RD/4FT	20MM RED
HTW25BK/4FT	25MM BLACK
HTW32RD/4FT	32MM RED
HTW38BK/4FT	38MM BLACK
HTW38RD/4FT	38MM RED
HTW50RD/4FT	50MM RED
HTW75RD/4FT	75MM RED
HTW7BK/4FT	7MM BLACK
HTW7RD/4FT	7MM RED



METAL CABLE GLANDS WITH LOCKNUT

Part Number	Size
MCG16	16MM
MCG20	20MM
MCG25	25MM
MCG32	32MM
MCG40	40MM
MCG50	50MM
MCG63	63MM



BLACK CABLE GLAND WITH LOCKNUT

Part Number	Size
NCG16	16MM
NCG20	20MM
NCG25	25MM
NCG32	32MM
NCG40	40MM
NCG50	50MM
NCG63	63MM



PVC RAINBOW INSULATION TAPE 10PK

Part Number	Size
PVCRP	-



APPLIANCE TEST TAGS WITH MARKER PEN

Part Number	Size
ATTMP	-



PURLIN CLIP 100PK

Part Number	Size
PC813	8-13MM
PC1620	16-20MM
PC2532	25-32MM



DUCT TAPE 48MM

Part Number	Size
DT48BK	-
DT48GY	-



6 PIECE SPADE BIT SET

Part Number	Size
SB6PS	-



SPADE BIT

Part Number	Size
SB22	22MM
SB35	35MM



DOUBLE SIDED TAPE

Part Number	Size
DST1018	18MMx10M



UNDERGROUND ELECTRICAL MARKER TAPE

Part Number	Size
UMT/100	100 MTRS
UMT/500	500 MTRS



COMMS UNDERGROUND MARKER TAPE

Part Number	Size
CMT/100	100 MTRS
CMT/500	500MTRS



HACKSAW BLADE

Part Number	Size
HSB	32x300MM



JETLINE

Part Number	Breaking Strain/Length
JL90	90kg/1830m
JL163	163kg/950m



TOUCH UP CAN

Part Number	Colour
TUC-MB	BLACK
TUC-MW	WHITE
TUC-X15	ORANGE



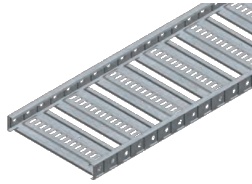
EARTH CLAMP METAL TENBY CLIP

Part Number	Size
390-2448	12-32MM



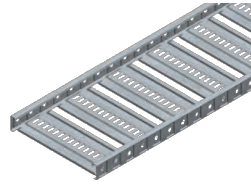
Ladder Tray





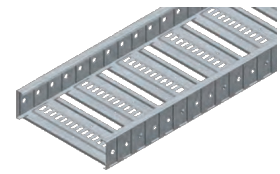
**CT3 LADDER TRAY 3 METRE
HDG**

Part Number	Size
CACT3-150	150MM
CACT3-300	300MM
CACT3-450	450MM
CACT3-600	600MM



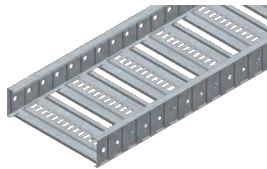
**CT3 LADDER TRAY 3 METRE
GALVABOND**

Part Number	Size
CACT3-150	150MM
CACT3-300	300MM
CACT3-450	450MM
CACT3-600	600MM



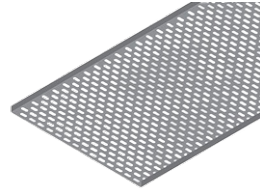
**CT5 LADDER TRAY 3 METRE
HDG**

Part Number	Size
CACT5-150	150MM
CACT5-300	300MM
CACT5-450	450MM
CACT5-600	600MM



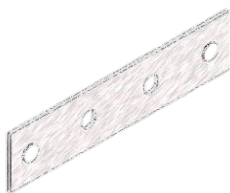
**CT5 LADDER TRAY 3 METRE
GALVABOND**

Part Number	Size
CACT5-150	150MM
CACT5-300	300MM
CACT5-450	450MM
CACT5-600	600MM



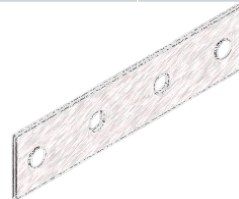
**GALVABOND PERFORATED
TRAY**

Part Number	Size
PTR75	75MM
PTR100	100MM
PTR150	150MM
PTR230	230MM
PTR300	300MM



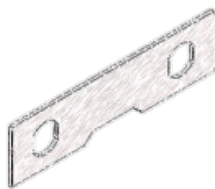
**CT SPLICE PLATE/JOINER
HDG**

Part Number	
CACT3SP	
CACT5SP	



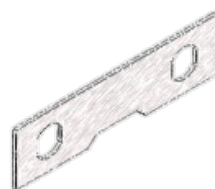
**CT SPLICE PLATE/JOINER
ZINC**

Part Number	
CACT3SPZ	
CACT5SPZ	



**CT LINK PLATE
HDG**

Part Number	
CACT3LP	
CACT5LP	



**CT LINK PLATE
ZINC**

Part Number	
CACT3LPZ	
CACT5LPZ	

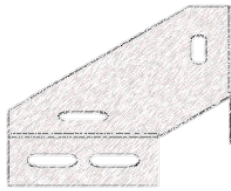
LADDER TRAY

SPLICE PLATE/JOINER

LINK PLATE

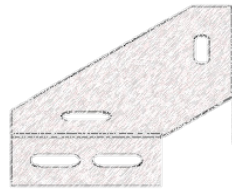


TX BRACKET



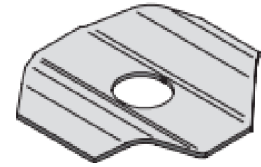
CT3 TX BRACKET HDG

Part Number	Size
CACT3TXB	-
CACT5TXB	-



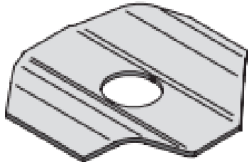
CT3 TX BRACKET ZINC PLATE

Part Number	Size
CACT3TXBZ	-
CACT5TXBZ	-



CENTRE HOLD DOWN CLAMP HDG

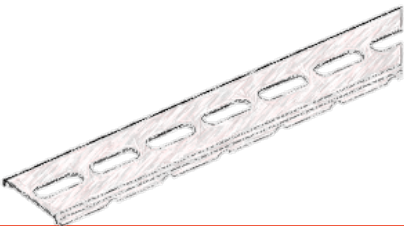
Part Number	Size
CACT3CHDC	-
CACT5CHDC	-



CENTRE HOLD DOWN CLAMP ZINC

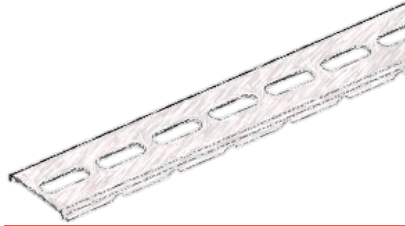
Part Number	Size
CACT3CHDCZ	-
CACT5CHDCZ	-

BEND SIDE



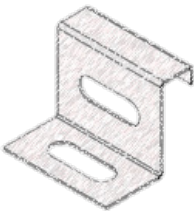
CT3 BEND SIDE HDG

Part Number	Size
CACT3BS	-
CACT5BS	-



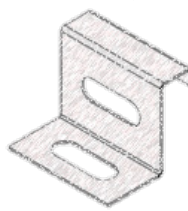
CT BEND SIDE ZINC PLATE

Part Number	Size
CACT3BSZ	-
CACT5BSZ	-



HOLD DOWN BRACKET HDG

Part Number	Size
CACT3HDB	-
CACT5HDB	-



CT HOLD DOWN BRACKET ZINC

Part Number	Size
CACT3HDBZ	-
CACT5HDBZ	-



CT3/5 NUT AND BOLT SET

Part Number	Size
CACTNBS	

HOLD DOWN BRACKET

Basor Cable Trays

Conduit Connection provide and proudly distribute the Basor range of PVC slotted and solid cable trays. We also provide a range of internal, external and flat bends. Wall brackets and hangers to suit every size. All products are self extinguishing.

Sizes range from 100mm up to 600mm.

Product suited to the following installations:

- Solar
- Communications and Data Centres (Amazon approved)
- Water Treatment plants
- Mining
- Chemical Industry
- Railways
- Sea and port installations

Main Advantages:

- ✓ Excellent corrosive resistance
- ✓ Reduced danger of electric shock with PVC unlike steel cable trays
- ✓ Avoids electrical creepage, hot spots and electrical arcs
- ✓ Good performance outdoors as there is no corrosion
- ✓ No maintenance.

	ADVANTAGES	DISADVANTAGES
FiberGlass Cable Tray and Cable Ladder	Cost efficient	Lower admissible working load
	Equal or better chemical behaviour	
	Self extinguishing	Greater limitation of working temperatures
	Recyclable	
	Lighter weight for ease of installation	
Stainless Steel Cable Tray and Cable Ladder	No grounding or bonding necessary. Maximized electrical safety of the installation thanks to insulating PVC	Lower admissible working load
	Cost efficient	Greater limitation of working temperatures
Better performance in a saline environment compared to SS316, SS304 and HDG		
Aluminium Cable Tray and Cable Ladder	Major electrical safety of the installation, i.e. does not have electrical continuity	Lower admissible working load
	Cost efficient	Greater limitation of working temperatures
	Better behaviour against aluminium corrosion in the ladder welds made by non anodized material	



LOW PROFILE CABLE TRAY

Part Number	Size
BPE-C	60MM x 100MM
BPE-C	60MM x 150MM
BPE-C	60MM x 200MM
BPE-C	60MM x 300MM



HIGH PROFILE CABLE TRAY

Part Number	Size
BPE-C	100MM x 200MM
BPE-C	100MM x 300MM
BPE-C	100MM x 400MM
BPE-C	100MM x 600MM



PERFORATED CABLE TRAY LOW PROFILE

Part Number	Size
BPE	60MM x 100MM
BPE	60MM x 150MM
BPE	60MM x 200MM
BPE	60MM x 300MM



PERFORATED CABLE TRAY HIGH PROFILE

Part Number	Size
BPE	100MM x 200MM
BPE	100MM x 300MM
BPE	100MM x 400MM
BPE	100MM x 600MM



EXTERNAL RISER

Part Number	Size
CXBPE	60MM x 100MM
CXBPE	60MM x 150MM
CXBPE	60MM x 200MM
CXBPE	60MM x 300MM
CXBPE	100MM x 200MM
CXBPE	100MM x 300MM
CXBPE	100MM x 400MM
CXBPE	100MM x 600MM



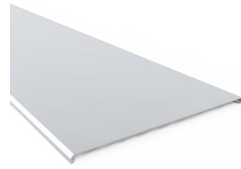
INTERNAL RISER

Part Number	Size
CCBPE	60MM x 100MM
CCBPE	60MM x 150MM
CCBPE	60MM x 200MM
CCBPE	60MM x 300MM
CCBPE	100MM x 200MM
CCBPE	100MM x 300MM
CCBPE	100MM x 400MM
CCBPE	100MM x 600MM



FLAT BEND

Part Number	Size
CPBPE	60MM x 100MM
CPBPE	60MM x 150MM
CPBPE	60MM x 200MM
CPBPE	60MM x 300MM
CPBPE	100MM x 200MM
CPBPE	100MM x 300MM
CPBPE	100MM x 400MM
CPBPE	100MM x 600MM



LID

Part Number	Size
TBPE	100MM
TBPE	150MM
TBPE	200MM
TBPE	300MM
TBPE	400MM
TBPE	600MM



FLAT BEND LID

Part Number	Size
TCPBPE	100MM
TCPBPE	150MM
TCPBPE	200MM
TCPBPE	300MM
TCPBPE	400MM
TCPBPE	600MM



EXTERNAL RISER LID

Part Number	Size
TCXBPE	60MM x 100MM
TCXBPE	60MM x 150MM
TCXBPE	60MM x 200MM
TCXBPE	60MM x 300MM
TCXBPE	100MM x 200MM
TCXBPE	100MM x 300MM
TCXBPE	100MM x 400MM
TCXBPE	100MM x 600MM



INTERNAL LID

Part Number	Size
TCCBPE	60MM x 100MM
TCCBPE	60MM x 150MM
TCCBPE	60MM x 200MM
TCCBPE	60MM x 300MM
TCCBPE	100MM x 200MM
TCCBPE	100MM x 300MM
TCCBPE	100MM x 400MM
TCCBPE	100MM x 600MM



END CAP COVER

Part Number	Size
TFBPE	60MM x 100MM
TFBPE	60MM x 150MM
TFBPE	60MM x 200MM
TFBPE	60MM x 300MM
TFBPE	100MM x 200MM
TFBPE	100MM x 300MM
TFBPE	100MM x 400MM
TFBPE	100MM x 600MM



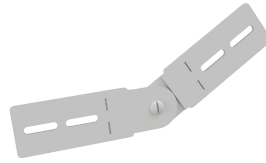
**90 ANGLE PLATE
(NO GUSSET)**

Part Number	Size
PDBPE	60MM
PDBPE	100MM



ANGLE PLATE HORIZONTAL

Part Number	Size
JUBPE-B	60MM
JUBPE-B	100MM



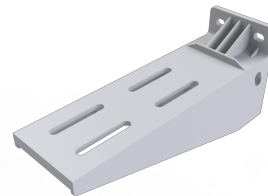
ANGLE PLATE UP OR DOWN

Part Number	Size
JUBPE-A	60MM
JUBPE-A	100MM



FLOOR/ CEILING SUPPORT

Part Number	Size
SVC	100MM
SVC	150MM
SVC	200MM
SVC	300MM
SVC	400MM
SVC	600MM



WALL SUPPORT SHG

Part Number	Size
SHG	100MM
SHG	150MM
SHG	200MM
SHG	300MM
SHG	400MM
SHG	600MM



M10 BOLTS (STAINLESS STEEL)

Part Number	Size
CT2 M10	100MM



CLAMP

Part Number	Size
BIK10-BPE	60MM x 100MM
BIK10-BPE	60MM x 150MM
BIK10-BPE	60/100MM x 200MM
BIK10-BPE	60/100MM x 300MM
BIK10-BPE	100MM x 400MM
BIK10-BPE	100MM x 600MM



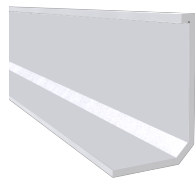
U PROFILE

Part Number	Size
PSHG-PSHGR	2M STEEL
PSHGR	600MM



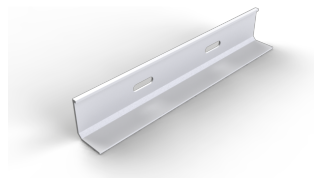
HEAD

Part Number
KSHGR



DIVIDER STRIP

Part Number	Size
PSBPE	60MM
TPSBPE	100MM



JOINER/ COUPLER

Part Number	Size
JUBPE	60MM
JUBPE	100MM
Nuts and bolts included	



NUT AND BOLT PACK

Part Number	Details
CTBP	4 BOLTS + 4 NUTS

NOTES





CONDUIT CONNECTION PTY LTD

ABN 46 144 022 373

W www.conduitconnection.com.au

E info@conduitconnection.com.au

Head Office:

1A/12 Mars Road
Lane Cove West
NSW 2066
T (02) 9980 7555

4/38 Bishop Street
Kelvin Grove
QLD 4059
T (07) 3856 0086

260 Welshpool Road
Welshpool
WA 6106
T (08) 6278 7500

17 Jersey Drive
Epping
VIC 3076
T (03) 9401 2300